

Service Manual

Pioneer

C.E.SUPPLY

ORDER NO.
CRT2327

CASSETTE CAR STEREO WITH FM/AM ELECTRONIC TUNER

KEH-1906ZZZ

X1R/UC

- This additional service manual is designed to be used together with Model KEH-1906ZZ/X1H/UC Service Manual CRT1721. Refer to it for finding parts numbers and adjustment, etc. which are not shown in this manual.

VEHICLE	DESTINATION	PRODUCED AFTER	PART No.	ID No.	PIONEER MODEL No.
	U.S.A, CANADA	1999		—	KEH-1906ZZZ/X1R/UC

ELECTRICAL PARTS LIST(Page 11)

Tuner Amp Unit

Symbol and Description	Part No.	
	KEH-1906ZZ/X1H/UC	KEH-1906ZZZ/X1R/UC
Q271 Transistor	2SB1242	2SB1241
L502 Inductor	Not used	LCTBR47K2125
R501	RS1/10S101J	RS1/10S271J
R545	RS1/8S0R0J	Not used

WB Unit

Symbol and Description	Part No.	
	KEH-1906ZZ/X1H/UC	KEH-1906ZZZ/X1R/UC
C802,803	CCSQCH120J50	CCSQCH150J50
C813	CCSQCH180J50	CCSQCH200J50

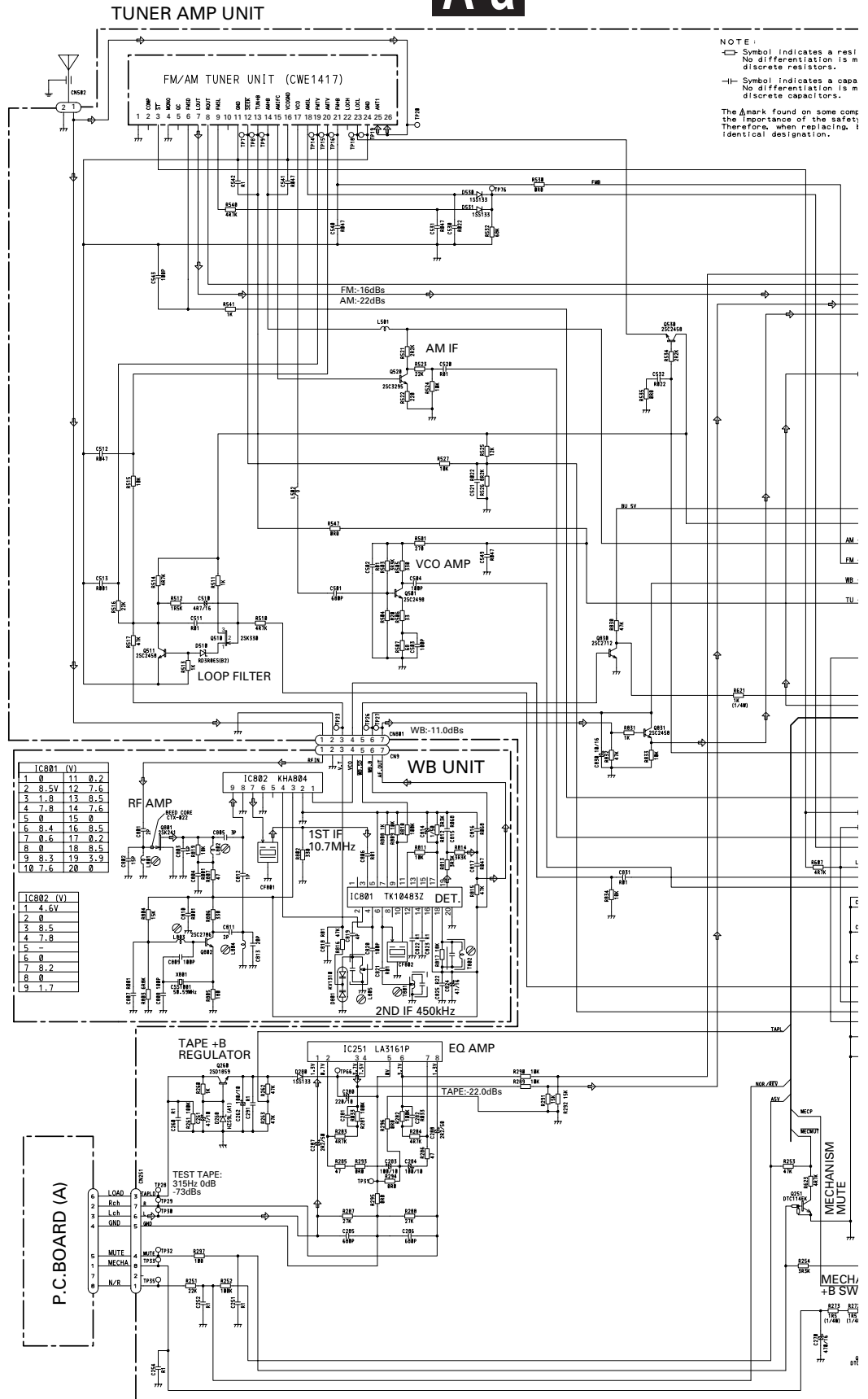
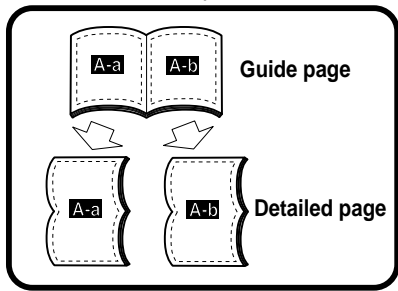
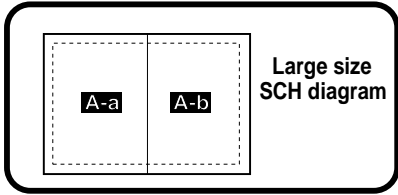
PIONEER ELECTRONIC CORPORATION 4-1, Meguro 1-Chome, Meguro-ku, Tokyo 153-8654, Japan
PIONEER ELECTRONICS SERVICE INC. P.O.Box 1760, Long Beach, CA 90801-1760 U.S.A.
PIONEER ELECTRONIC [EUROPE] N.V. Haven 1087 Keetberglaan 1, 9120 Melsele, Belgium
PIONEER ELECTRONICS ASIACENTRE PTE.LTD. 253 Alexandra Road, #04-01, Singapore 159936

3. SCHEMATIC DIAGRAM

3.1 OVERALL CONNECTION DIAGRAM (GUIDE PAGE)

Note: When ordering service parts, be sure to refer to "EXPLODED VIEWS AND PARTS LIST" or "ELECTRICAL PARTS LIST".

A-a



IC881 (V)		
1	0	11 0.2
2	0.5V	12 7.6
3	1.9	13 8.5
4	7.8	14 7.6
5	0	15 0
6	8.4	16 8.5
7	8.5	17 0.2
8	0	18 8.5
9	8.3	19 3.9
10	7.6	20 0

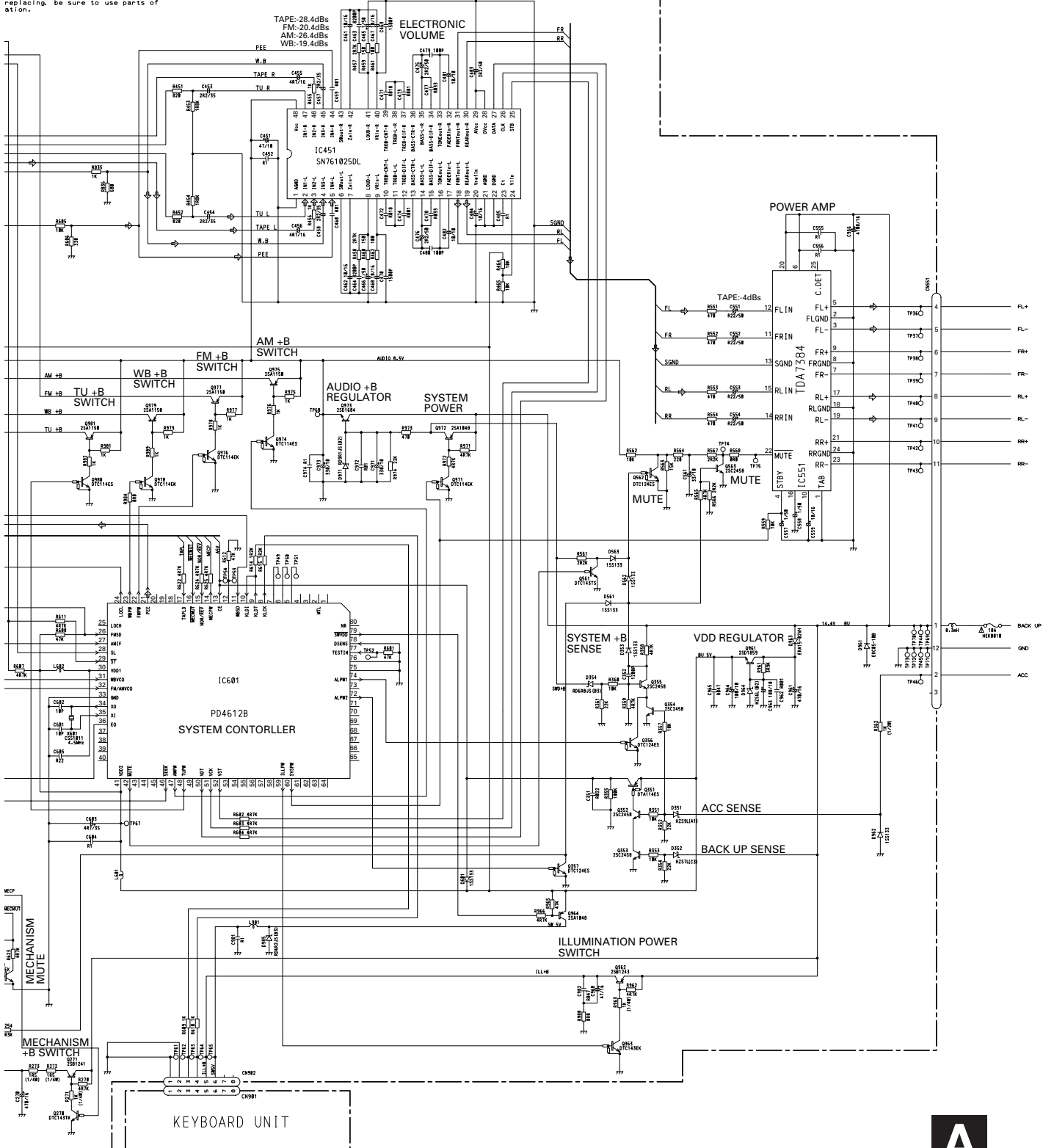
IC882 (V)		
1	4.6V	
2	0	
3	8.5	
4	7.8	
5	-	
6	0	
7	8.2	
8	0	
9	1.7	

A

A-b

ates a resistor.
 .ation is made between chip resistors and
 istors.
 ates a capacitor.
 .ation is made between chip capacitors and
 acitors.
 on some component parts indicates
 f the safety factor of the part.
 replacing, be sure to use parts of
 ation.

Decimal points for resistor
 and capacitor fixed values
 are expressed as:
 2.2=2R2
 0.022=R022



A

B

C

D

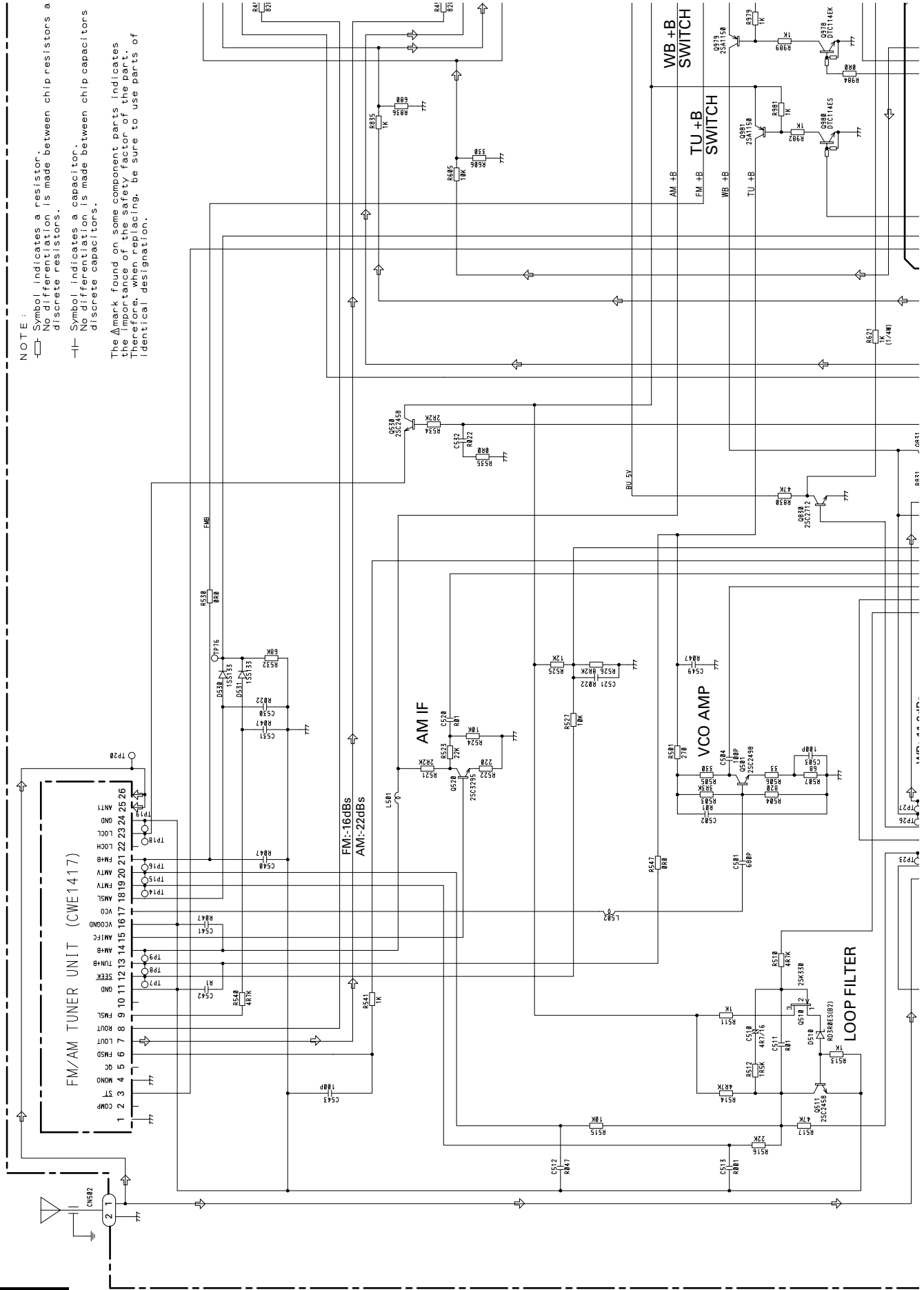
A-a A-b

NOTE:

- Symbol indicates a resistor. No differentiation is made between chip resistors and discrete resistors.
- ▭ Symbol indicates a capacitor. No differentiation is made between chip capacitors and discrete capacitors.

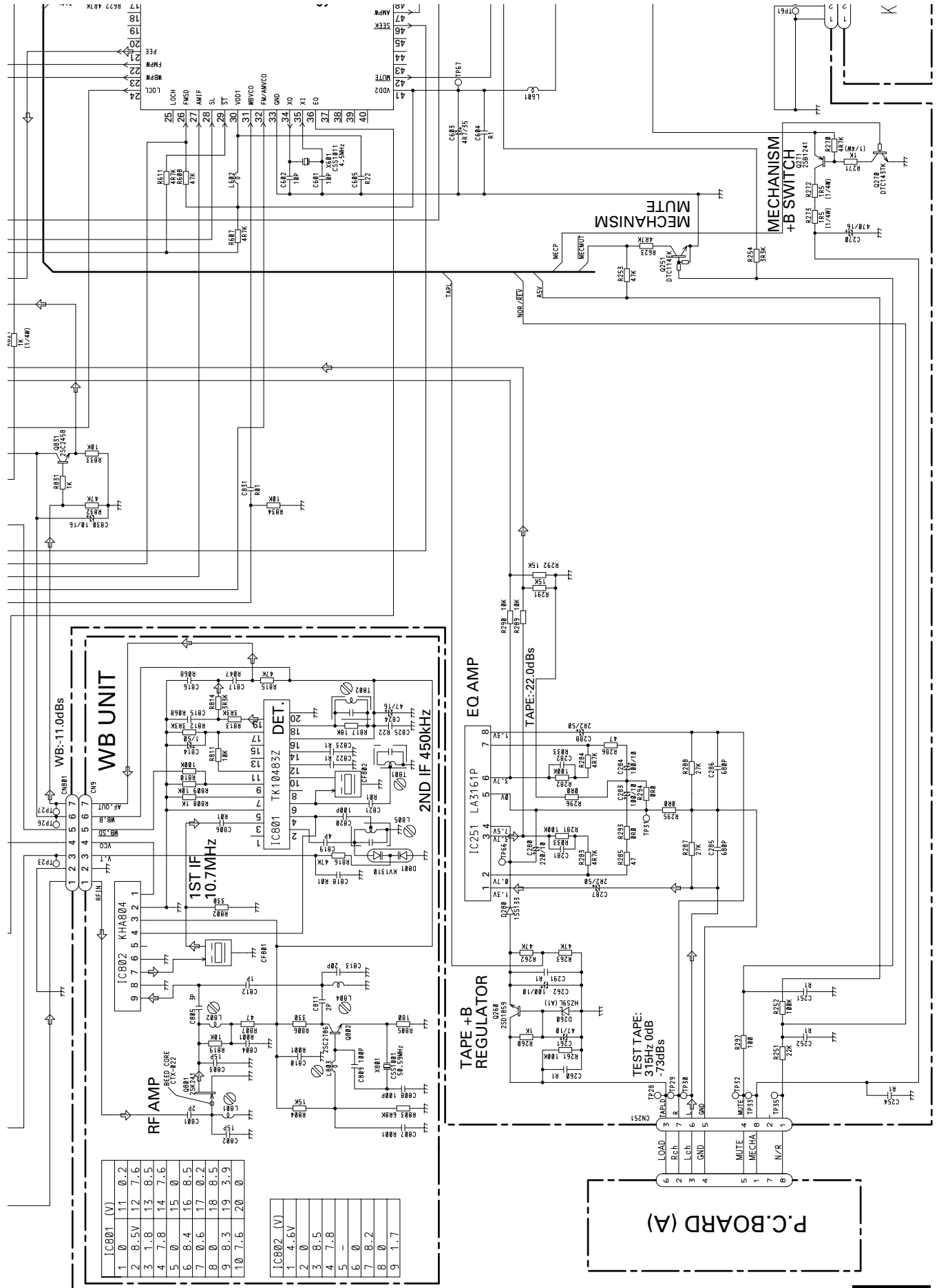
The Δ mark found on some component parts indicates the part location of the safety factor of the part. Therefore, when replacing, be sure to use parts of identical designation.

TUNER AMP UNIT



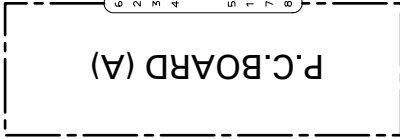
A-a

A-a A-b



IC801 (V)	1	2	3	4	5	6	7	8	9	10
0	11	0.2	8.5V	12	7.6	1.8	13	8.5	7.8	14
1	7.6	15.0	8.4	16	8.5	0.6	17	0.2	8.3	19
2	0	18	8.5	0	17.5	20	0			

IC802 (V)	1	2	3	4	5	6	7	8	9
4.6V	0	8.5	0	7.8	0	8.2	0	1.7	

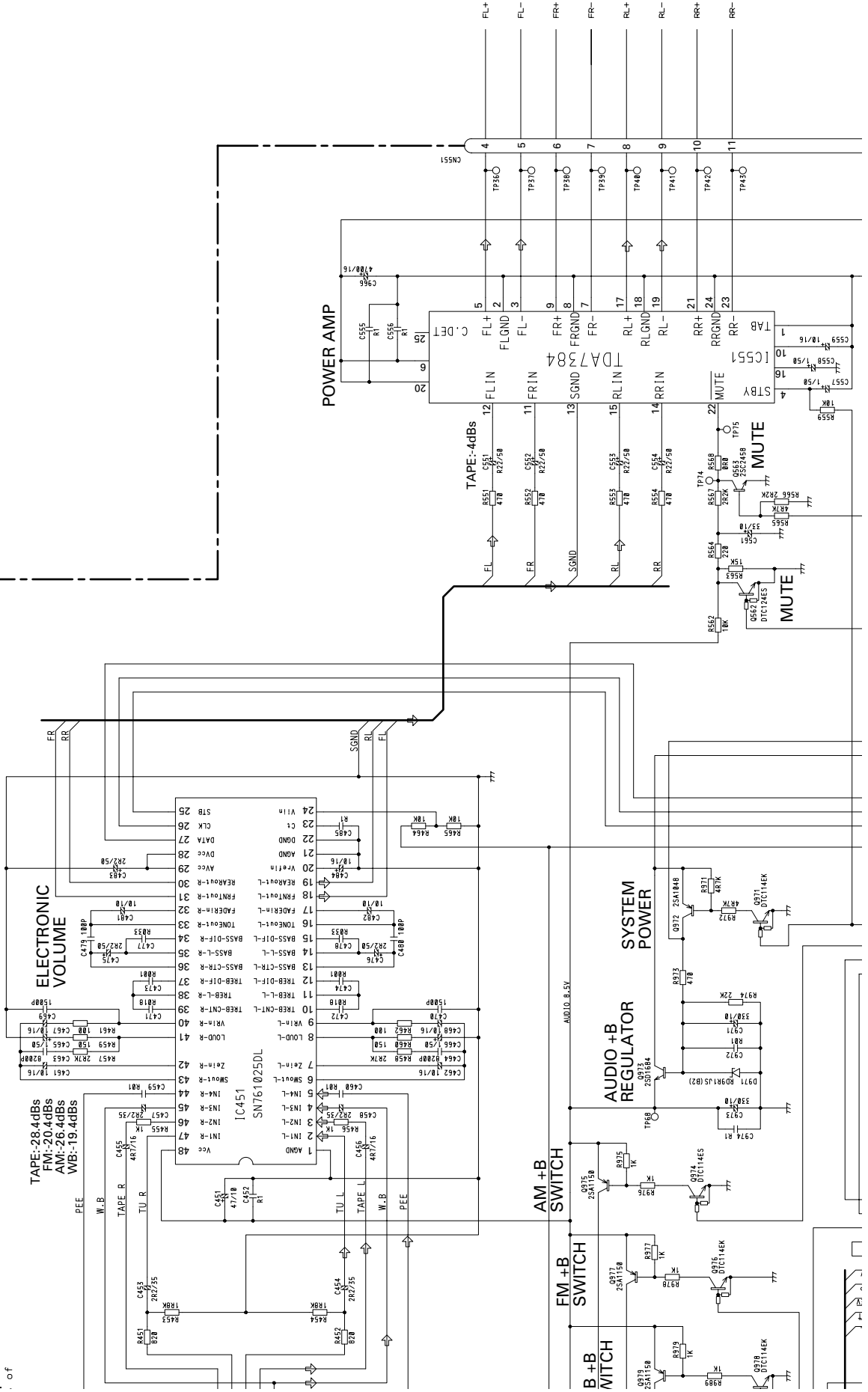


A-a

istors and
actors and
s
of

Decimal points for resistor
and capacitor fixed values
are expressed as:
2.2→2R2
0.022→R022

TAPE:-28.4dBs
FMI:-20.4dBs
AMI:-26.4dBs
WB:-19.4dBs



A-a A-b

A

B

C

D

1

2

3

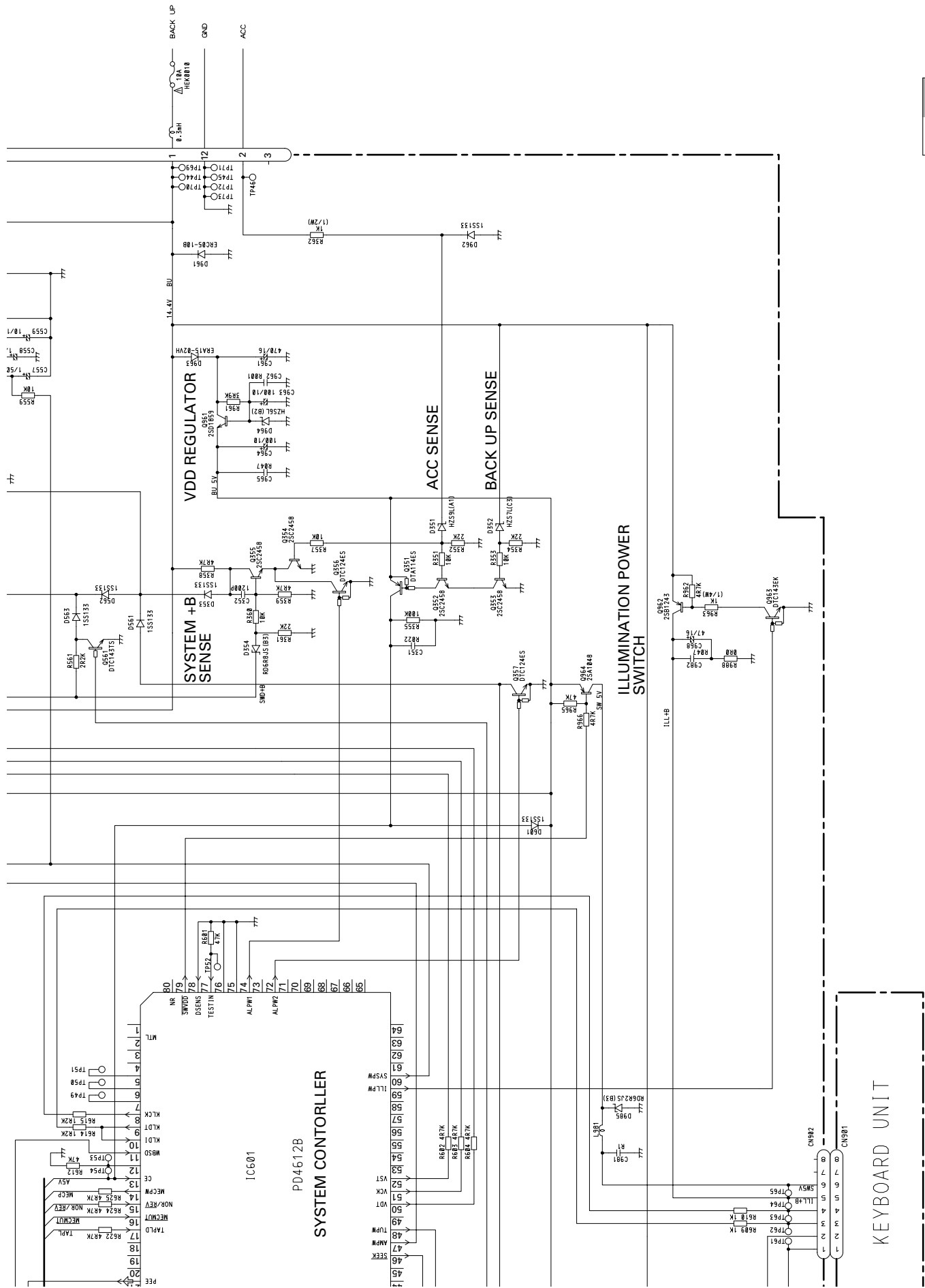
4

1

2

3

4



KEH-1906ZZZ

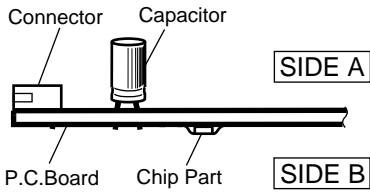
TUNER AMP UNIT

● Connection Diagram

NOTE FOR PCB DIAGRAMS

1. The parts mounted on this PCB include all necessary parts for several destination.
- For further information for respective destinations, be sure to check with the schematic diagram.

2. Viewpoint of PCB diagrams



IC, Q ADJ

Q973

Q961
Q972

VR301
VR302

IC251

Q530

Q511

Q260
Q510

IC551

Q353 Q271

Q357 Q352

Q354 Q351
Q356
Q501

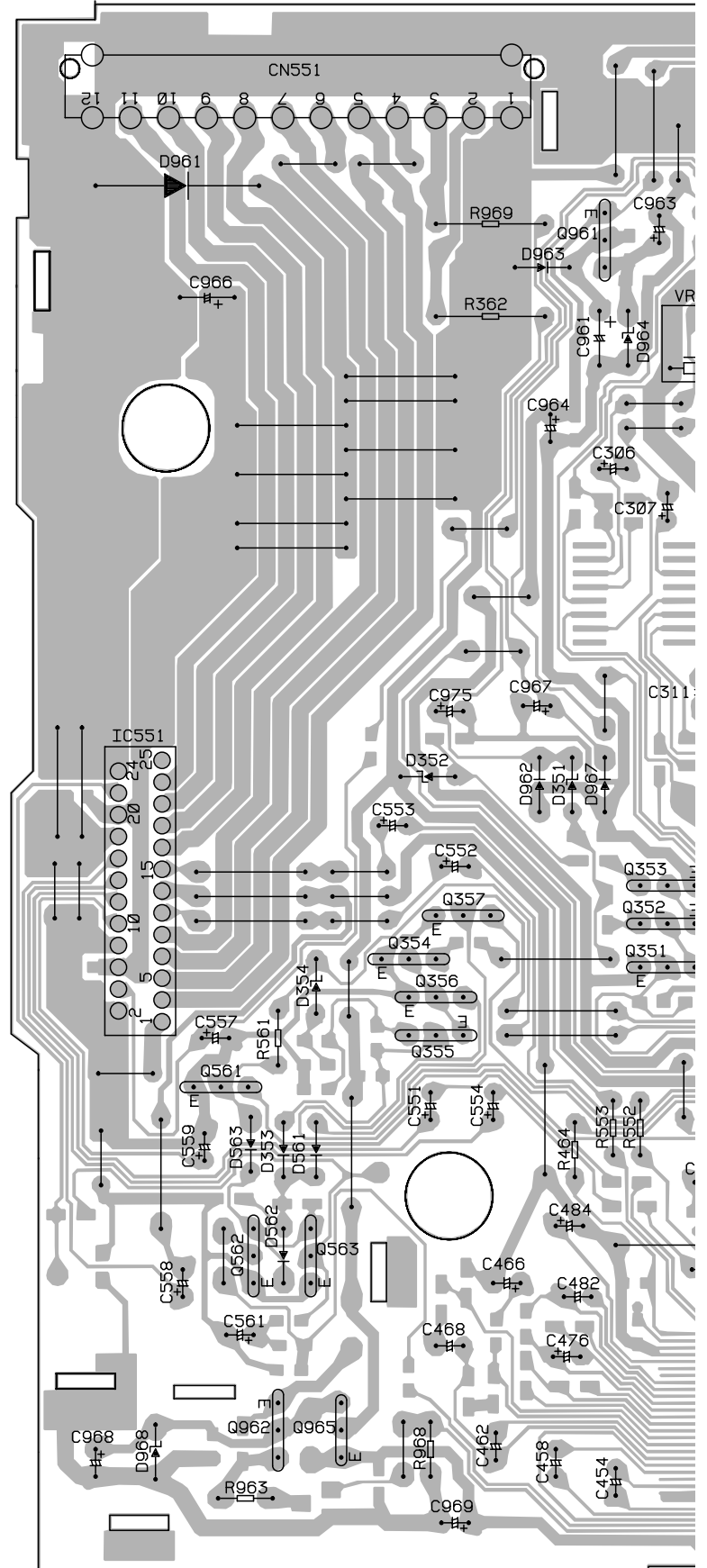
Q561 Q355

Q974 Q980
Q563 Q562

Q975 Q981

Q964

Q962 Q965

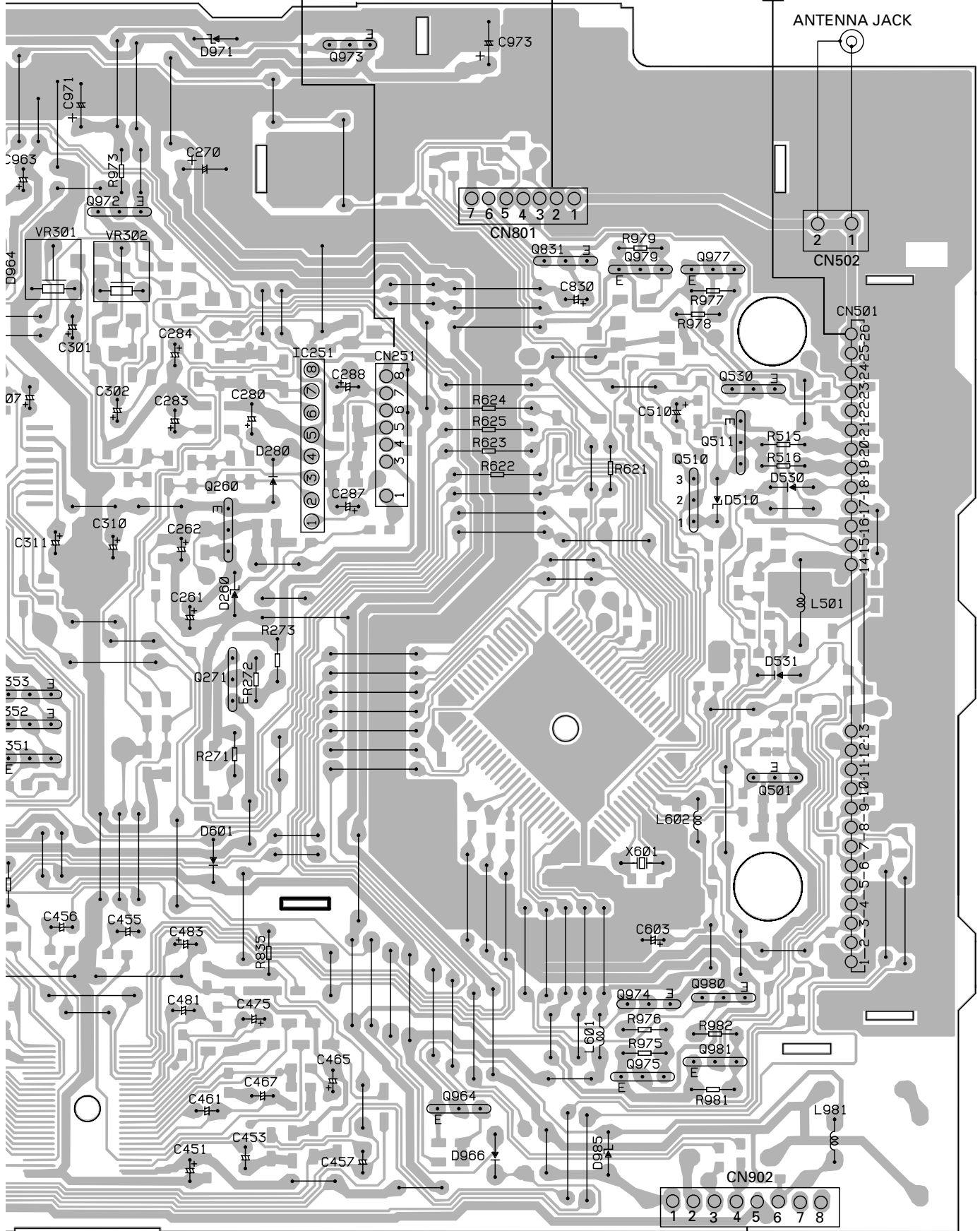


P.C. BOARD(A)

WB UNIT CN9

FM/AM TUNER UNIT

SIDE A



A

B

C

D

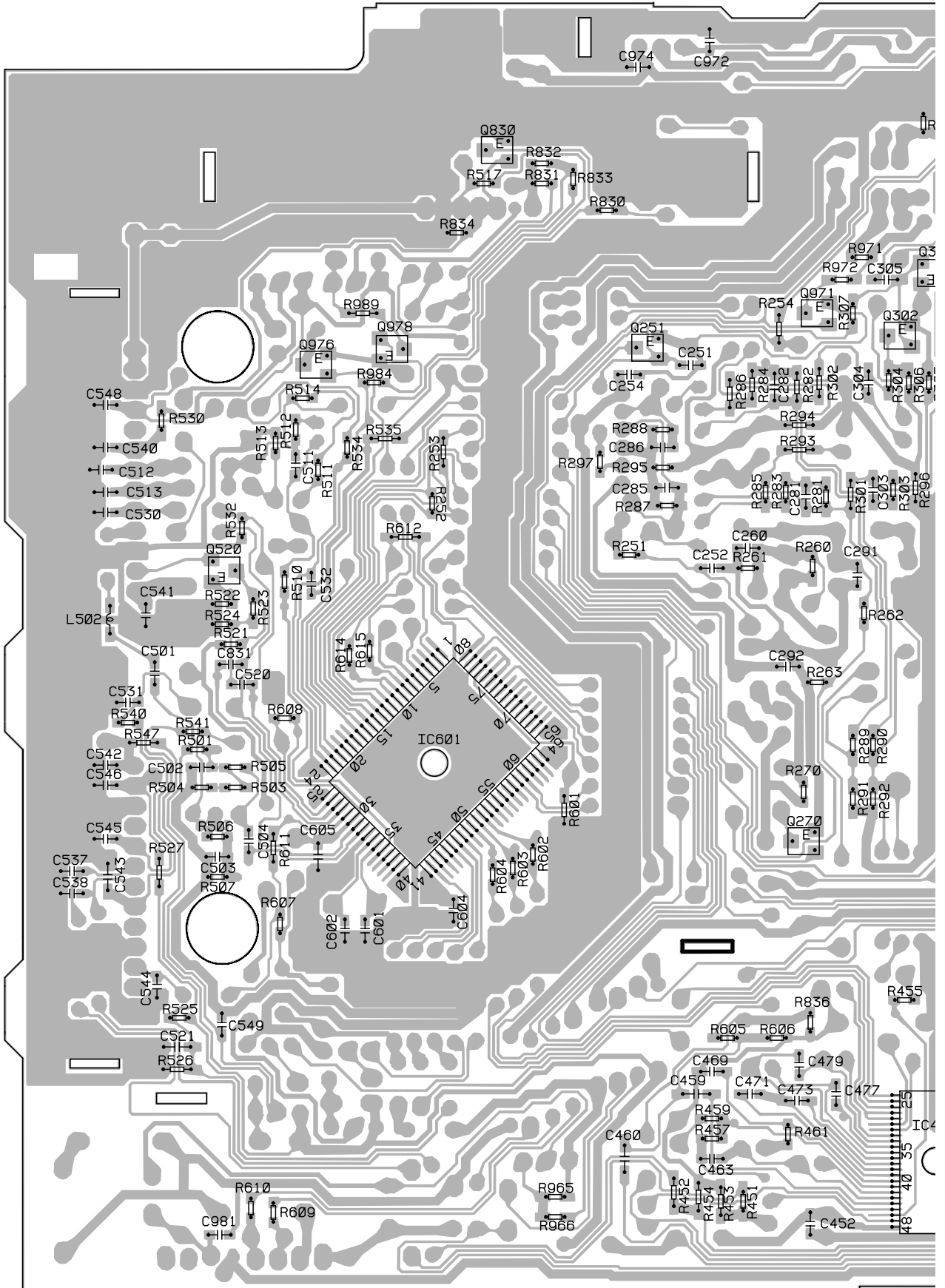
KEYBOARD UNIT CN901

A

B

C

D



1

2

3

4

IC, Q

SIDE B

Q830

Q301

Q971

Q302

Q978

Q976

IC301

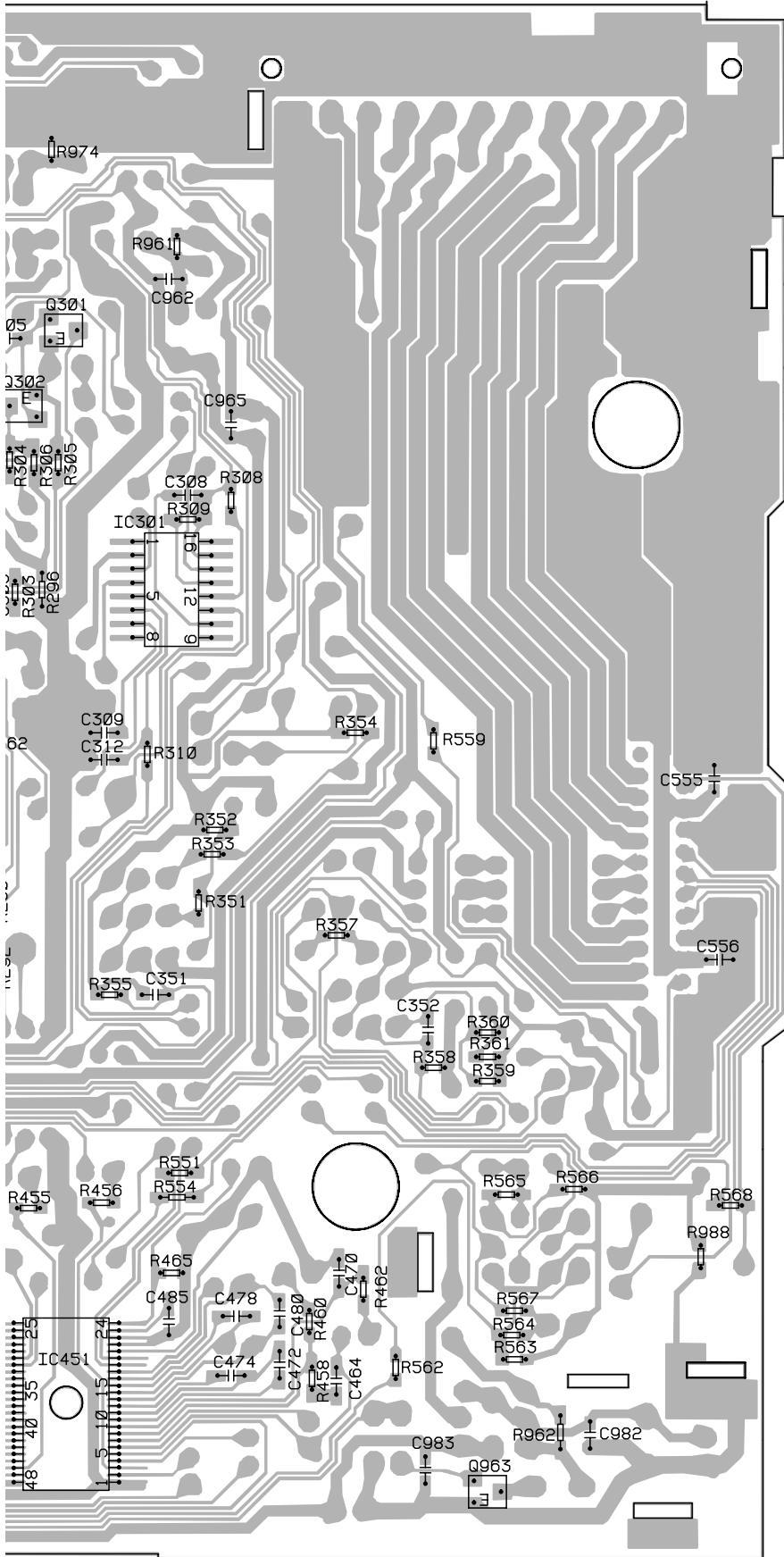
Q520

IC601

Q270

IC451

Q963



A

B

C

D

5. ELECTRICAL PARTS LIST

NOTE:

- Parts whose parts numbers are omitted are subject to being not supplied.
- The part numbers shown below indicate chip components.

Chip Resistor

RS1/OSOOOJ,RS1/OOSOOOJ

Chip Capacitor (except for CQS.....)

CKS....., CCS....., CSZS.....

====Circuit Symbol and No.====Part Name	Part No.	====Circuit Symbol and No.====Part Name	Part No.
Unit Number : HWM0013		D 562 Diode	1SS133
Unit Name : Tuner Amp Unit		D 563 Diode	1SS133
		D 601 Diode	1SS133
		D 961 Diode	ERC05-10B
		D 962 Diode	1SS133
MISCELLANEOUS			
IC 251 IC	LA3161P		
IC 451 IC	SN761025DL	D 963 Diode	ERA15-02VH
IC 551 IC	TDA7384	D 964 Diode	HZS6L(B2)
IC 601 IC	PD4612B	D 971 Diode	RD9R1JS(B2)
Q 251 Transistor	DTC114EK	D 985 Diode	RD6R2JS(B3)
		L 501 Ferri-Inductor	CTF-157
Q 260 Transistor	2SD1859		
Q 270 Transistor	DTC143TK	L 502 Inductor	LCTBR47K2125
Q 271 Transistor	2SB1241	L 601 Ferri-Inductor	LAU2R2K
Q 351 Transistor	DTA114ES	L 602 Ferri-Inductor	LAU2R2K
Q 352 Transistor	2SC2458	L 981 Ferri-Inductor	LAU2R2K
		X 601 Crystal Resonator 4.500MHz	CSS1077
Q 353 Transistor	2SC2458		
Q 354 Transistor	2SC2458	RESISTORS	
Q 355 Transistor	2SC2458	R 251	RS1/10S223J
Q 356 Transistor	DTC124ES	R 252	RS1/10S104J
Q 357 Transistor	DTC124ES	R 253	RS1/8S473J
		R 254	RS1/8S332J
Q 501 Transistor	2SC2498	R 260	RS1/10S102J
Q 510 Transistor	2SK330		
Q 511 Transistor	2SC2458	R 261	RS1/10S104J
Q 520 Transistor	2SC3295	R 262	RS1/10S473J
Q 530 Transistor	2SC2458	R 263	RS1/10S473J
		R 270	RS1/10S472J
Q 561 Transistor	DTC143TS	R 271	RD1/4PU102J
Q 562 Transistor	DTC124ES		
Q 563 Transistor	2SC2458	R 272	RD1/4PU1R5J
Q 830 Transistor	2SC2712	R 273	RD1/4PU1R5J
Q 831 Transistor	2SC2458	R 281	RS1/10S104J
		R 282	RS1/8S104J
Q 961 Transistor	2SD1859	R 283	RS1/10S472J
Q 962 Transistor	2SB1243		
Q 963 Transistor	DTC143EK	R 284	RS1/8S472J
Q 964 Transistor	2SA1048	R 285	RS1/10S470J
Q 971 Transistor	DTC114EK	R 286	RS1/8S470J
		R 287	RS1/10S273J
Q 972 Transistor	2SA1048	R 288	RS1/10S273J
Q 973 Transistor	2SD1684		
Q 974 Transistor	DTC114ES	R 289	RS1/10S103J
Q 975 Transistor	2SA1150	R 290	RS1/10S103J
Q 976 Transistor	DTC114EK	R 291	RS1/10S153J
		R 292	RS1/10S153J
Q 977 Transistor	2SA1150	R 293	RS1/8S0R0J
Q 978 Transistor	DTC114EK		
Q 979 Transistor	2SA1150	R 294	RS1/8S0R0J
Q 980 Transistor	DTC114ES	R 295	RS1/10S0R0J
Q 981 Transistor	2SA1150	R 296	RS1/8S0R0J
		R 297	RS1/10S101J
D 260 Diode	HZS9L(A1)	R 351	RS1/10S103J
D 280 Diode	1SS133		
D 351 Diode	HZS9L(A1)	R 352	RS1/10S223J
D 352 Diode	HZS7L(C3)	R 353	RS1/10S103J
D 353 Diode	1SS133	R 354	RS1/10S223J
		R 355	RS1/10S104J
D 354 Diode	RD6R8JS(B3)	R 357	RS1/10S103J
D 510 Diode	RD3R0ES(B2)		
D 530 Diode	1SS133	R 358	RS1/10S472J
D 531 Diode	1SS133	R 359	RS1/10S472J
D 561 Diode	1SS133	R 360	RS1/10S103J
		R 361	RS1/10S223J
		R 362	RD1/2PM102J

====Circuit Symbol and No.====Part Name	Part No.	====Circuit Symbol and No.====Part Name	Part No.
R 451	RS1/10S821J	R 622	RD1/4PU472J
R 452	RS1/8S821J	R 623	RD1/4PU472J
R 453	RS1/8S182J	R 624	RD1/4PU472J
R 454	RS1/8S182J	R 625	RD1/4PU472J
R 455	RS1/10S102J	R 830	RS1/10S473J
R 456	RS1/10S102J	R 831	RS1/10S102J
R 457	RS1/10S272J	R 832	RS1/10S473J
R 458	RS1/10S272J	R 833	RS1/10S103J
R 459	RS1/10S151J	R 834	RS1/10S103J
R 460	RS1/10S151J	R 835	RD1/4PU102J
R 461	RS1/10S101J	R 836	RS1/10S681J
R 462	RS1/10S101J	R 961	RS1/10S392J
R 464	RD1/4PU103J	R 962	RS1/8S472J
R 465	RS1/10S103J	R 963	RD1/4PU102J
R 501	RS1/10S271J	R 965	RS1/10S473J
R 503	RS1/10S332J	R 966	RS1/10S472J
R 504	RS1/10S821J	R 971	RS1/10S472J
R 505	RS1/10S331J	R 972	RS1/10S472J
R 506	RS1/10S330J	R 973	RD1/4PU471J
R 507	RS1/10S680J	R 974	RS1/10S223J
R 510	RS1/10S472J	R 975	RD1/4PU102J
R 511	RS1/10S102J	R 976	RD1/4PU102J
R 512	RS1/10S152J	R 977	RD1/4PU102J
R 513	RS1/10S102J	R 978	RD1/4PU102J
R 514	RS1/10S472J	R 979	RD1/4PU102J
R 515	RD1/4PU103J	R 981	RD1/4PU102J
R 516	RD1/4PU223J	R 982	RD1/4PU102J
R 517	RS1/10S473J	R 984	RS1/10S0R0J
R 521	RS1/10S222J	R 988	RS1/10S0R0J
R 522	RS1/10S221J	R 989	RS1/8S102J
R 523	RS1/10S223J	CAPACITORS	
R 524	RS1/10S103J	C 251	CKSQYB104K25
R 525	RS1/10S123J	C 252	CKSQYF104Z25
R 526	RS1/8S822J	C 254	CKSQYB104K16
R 527	RS1/8S103J	C 260	CKSQYB104K16
R 530	RS1/10S0R0J	C 261	CEJA470M10
R 532	RS1/10S683J	C 262	CEJA101M10
R 534	RS1/10S222J	C 270	CCH1183
R 535	RS1/8S0R0J	C 280	CCH1014
R 540	RS1/10S472J	C 281	CKSQYB333K25
R 541	RS1/10S102J	C 282	CKSYB333K25
R 547	RS1/8S0R0J	C 283	CEJA101M10
R 551	RS1/10S471J	C 284	CEJA101M10
R 552	RD1/4PU471J	C 285	CKSQYB681K50
R 553	RD1/4PU471J	C 286	CKSQYB681K50
R 554	RS1/8S471J	C 287	CEJA2R2M50
R 559	RS1/10S103J	C 288	CEJA2R2M50
R 561	RD1/4PU222J	C 291	CKSQYB104K16
R 562	RS1/10S103J	C 351	CKSQYB223K50
R 563	RS1/10S153J	C 352	CKSQYB122K50
R 564	RS1/10S221J	C 451	CEJA470M10
R 565	RS1/10S472J	C 452	CKSQYF104Z25
R 566	RS1/10S222J	C 453	CEJANP2R2M35
R 567	RS1/10S222J	C 454	CEJANP2R2M35
R 568	RS1/10S0R0J	C 455	CEJANP4R7M16
R 601	RS1/8S473J	C 456	CEJANP4R7M16
R 602	RS1/10S472J	C 457	CEJANP2R2M35
R 603	RS1/10S472J	C 458	CEJANP2R2M35
R 604	RS1/10S472J	C 459	CKSYB103K50
R 605	RS1/10S103J	C 460	CKSYB103K50
R 606	RS1/10S331J	C 461	CEJANP100M16
R 607	RS1/10S472J	C 462	CEJANP100M16
R 608	RS1/10S473J	C 463	CKSQYB822K50
R 609	RS1/10S102J	C 464	CKSQYB822K50
R 610	RS1/10S102J	C 465	CEJA1R0M50
R 611	RS1/8S472J	C 466	CEJA1R0M50
R 612	RS1/8S473J		
R 614	RS1/10S122J		
R 615	RS1/10S122J		
R 621	RD1/4PU102J		

====Circuit Symbol and No.====Part Name	Part No.	====Circuit Symbol and No.====Part Name	Part No.
C 467	CEJANP100M16	Unit Number : HWE0001	
C 468	CEJANP100M16	Unit Name : WB unit	
C 469	CKSQYB152K50		
C 470	CKSQYB152K50		
C 471	CKSQYB183K25		
		MISCELLANEOUS	
C 472	CKSQYB183K25	IC 801 IC	TK10483Z
C 473	CKSQYB102K50	IC 802 IC	KHA804
C 474	CKSQYB102K50	Q 801 FET	2SK241
C 475	CEJA2R2M50	Q 802 Transistor	2SC2786
C 476	CEJA2R2M50	D 801 Diode	KV1310
		L 801 Coil	CTC1006
C 477	CKSQYB333K25	L 802 Coil	CTC1006
C 478	CKSQYB333K25	L 803 Coil	CTC1030
C 479	CCSOSL101J50	L 804 Coil	CTC1006
C 480	CCSOSL101J50	L 805 Coil	CTE1001
C 481	CEJANP100M10		
		T 801 Coil	CTE1002
C 482	CEJANP100M10	T 802 Coil	CTE1003
C 483	CEJA2R2M50	CF 801 FM Ceramic Filter	CTF-101
C 484	CEJA100M16	CF 802 Filter	CTF1350
C 485	CKSQYB104K16	X 801 Crystal Resonator 50.59MHZ	CSS1001
C 501	CKSQYB681K50		
		RESISTORS	
C 502	CKSQYB103K50	R 802	RD1/4PU331J
C 503	CCSOSL101J50	R 803	RD1/4PU682J
C 504	CCSQCH101J50	R 804	RD1/4PU153J
C 510 4.7μF/16V	CCH1005	R 805	RD1/4PU181J
C 511	CKSQYB103K50	R 806	RD1/4PU331J
C 512	CKSQYB473K50	R 807	RD1/4PU470J
C 513	CKSQYB102K50	R 808	RS1/10S102J
C 520	CKSQYB103K50	R 809	RS1/10S103J
C 521	CKSYB223K50	R 810	RD1/4PU104J
C 530	CKSQYB223K50	R 811	RD1/4PU103J
C 531	CKSQYB473K16	R 812	RD1/4PU332J
C 532	CKSQYB223K50	R 813	RD1/4PU332J
C 540	CKSQYB473K16	R 814	RD1/4PU332J
C 541	CKSQYB473K16	R 815	RD1/4PU473J
C 542	CKSQYB104K16	R 816	RD1/4PU473J
C 543	CCSSL101J50	R 817	RD1/4PU183J
C 549	CKSQYB473K16	R 819	RS1/10S103J
C 551	CEJAR22M50		
C 552	CEJAR22M50		
C 553	CEJAR22M50		
		CAPACITORS	
C 554	CEJAR22M50	C 801	CCSQCK2R0C50
C 555	CKSQYB104K25	C 802	CCSQCH150J50
C 556	CKSQYB104K25	C 803	CCSQCH150J50
C 557	CEJA1R0M50	C 804	CKSQYB102K50
C 558	CEJA1R0M50	C 805	CCSQJ3R0C50
C 559	CEJA100M16	C 806	CKSQYB103K50
C 561	CEJA330M10	C 807	CKSQYB102K50
C 601	CCSQCH100D50	C 808	CCSQJ101J50
C 602	CCSQCH100D50	C 809	CCSQJ101J50
C 603	CEJA4R7M35	C 810	CKSQYB102K50
C 604	CKSQYB104K25	C 811	CCSQCK2R0C50
C 605	CKSYB224K25	C 812	CCSQCK1R0C50
C 830	CEJA100M16	C 813	CCSQCH200J50
C 831	CKSQYB103K25	C 814	CEAL1R0M50
C 961 470μF/16V	CCH1183	C 815	CQEA683J50
C 962	CKSQYB102K50	C 816	CQEA683J50
C 963	CEJA101M10	C 817	CKSQYB473K25
C 964	CEJA101M10	C 818	CKSQYB103K50
C 965	CKSQYB473K16	C 819	CCSQCH4R0C50
C 966 4700μF/16V	CCH1188	C 820	CCSQCH101J50
C 968	CEJA470M16	C 821	CKSQYB103K50
C 971	CEAS331M10	C 822	CKSQYF104Z25
C 972	CKSQYB103K50	C 823	CKSQYF104Z25
C 973	CEAS331M10	C 824	CEAL470M16
C 974	CKSQYB104K16	C 825	CKSYF224Z50
C 981	CKSQYB104K16		
C 982	CKSQYB473K16		

EXPLODED VIEW AND PARTS LIST**CHASSIS (Page 30)****● CHASSIS SECTION PARTS LIST**

Mark	No.	Description	Part No.	
			KEH-1906ZZ/X1H/UC	KEH-1906ZZ2/X1R/UC
	17	Tuner Amp Unit	HWM4373	HWM0013
	20	Cord Assy	HDE0005	Not used
	33	WB Unit	HWE1396	HWE0001

PACKING METHOD (Page 35)**● PACKING SECTION PARTS LIST**

Mark	No.	Description	Part No.	
			KEH-1906ZZ/X1H/UC	KEH-1906ZZ2/X1R/UC
	6	Cord Assy	HDE0005	Not used
	7	Accessory Assy	HEA2177	HEA0027
	8	Owner's Manual(English,French)	HRD1923	HRD0086
	9	Contain Box	HHL0062	HHL0174